

**Boston  
Scientific**  
Advancing science for life™

## PERIPHERAL INTERVENTIONS

Product Catalogue





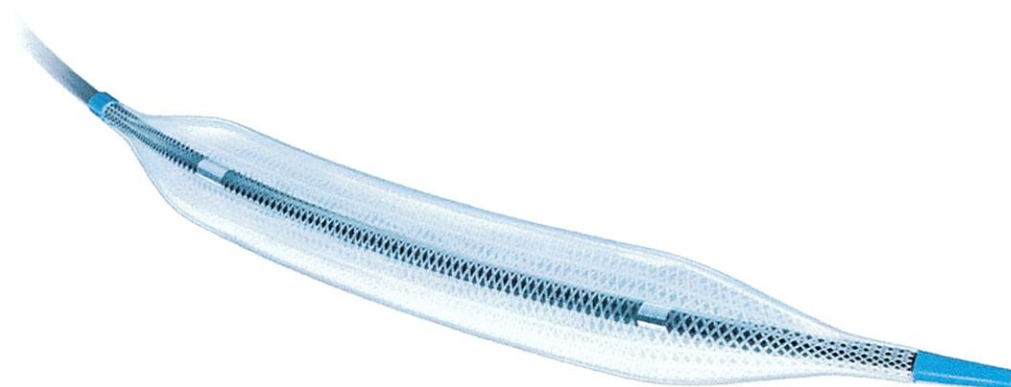
### 3 Specialty Balloons

## Athletis™

Ultra-High-Pressure Balloon

- Athletis' proprietary braided balloon design enables optimised deliverability and ultra-high pressures up to 40 ATM.
- Ideal blend of track and a low crossing profile
- Athletis treats highly calcified, long, stenotic, or resistant fibrotic lesions, including those commonly found in AV access procedures

Order Number						
Catheter Working Length 50 cm	Catheter Working Length 75 cm	Catheter Working Length 135 cm	Balloon Diameter (mm)	Balloon Length (mm)	Sheath Compatibility (F) (mm)	
H74939347040250	H74939347040270		4	20	6	2.00
H74939347040450	H74939347040470		4	40	6	2.00
H74939347040650	H74939347040670		4	60	6	2.00
H74939347040850	H74939347040870		4	80	6	2.00
H74939347041050	H74939347041070		4	100	6	2.00
H74939347050250	H74939347050270		5	20	6	2.00
H74939347050450	H74939347050470	H74939347050410	5	40	6	2.00
H74939347050650	H74939347050670		5	60	6	2.00
H74939347050850	H74939347050870		5	80	6	2.00
H74939347051050	H74939347051070		5	100	6	2.00
H74939347060250	H74939347060270	H74939347060210	6	20	6	2.00
H74939347060450	H74939347060470	H74939347060410	6	40	6	2.00
H74939347060650	H74939347060670		6	60	6	2.00
H74939347060850	H74939347060870		6	80	6	2.00
H74939347061050	H74939347061070		6	100	6	2.00
H74939347070250	H74939347070270	H74939347070210	7	20	6	2.00
H74939347070450	H74939347070470	H74939347070410	7	40	6	2.00
H74939347070650	H74939347070670		7	60	6	2.00
H74939347070850	H74939347070870		7	80	6	2.00
H74939347071050	H74939347071070		7	100	6	2.00
H74939347080250	H74939347080270	H74939347080210	8	20	6	2.00
H74939347080350	H74939347080370		8	30	6	2.00
H74939347080450	H74939347080470	H74939347080410	8	40	6	2.00
H74939347080650	H74939347080670		8	60	6	2.00
H74939347080850	H74939347080870		8	80	6	2.00
H74939347081050	H74939347081070		8	100	6	2.00
H74939347090250	H74939347090270		9	20	7	2.33
H74939347090450	H74939347090470	H74939347090410	9	40	7	2.33
H74939347090850	H74939347090870		9	80	7	2.33
	H74939347100270		10	20	7	2.33
	H74939347100470	H74939347100410	10	40	7	2.33
	H74939347100870		10	80	7	2.33
	H74939347120270	H74939347120210	12	20	8	2.67
	H74939347120470	H74939347120410	12	40	8	2.67
	H74939347120670	H74939347120610	12	60	8	2.67

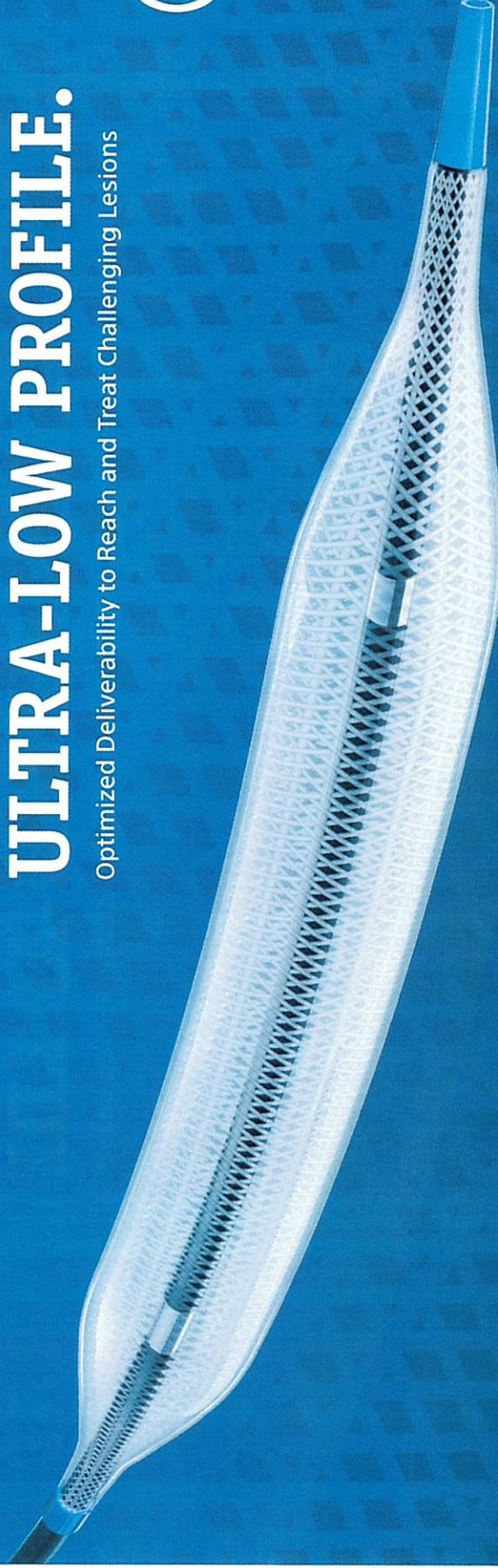




ATHLETIS™ Ultra-High-Pressure Balloon

# ULTRA-HIGH PRESSURE. ULTRA-LOW PROFILE.

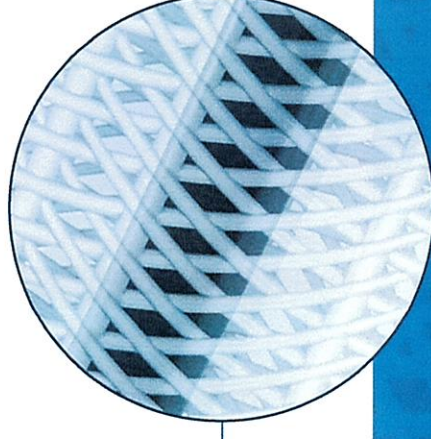
Optimized Deliverability to Reach and Treat Challenging Lesions



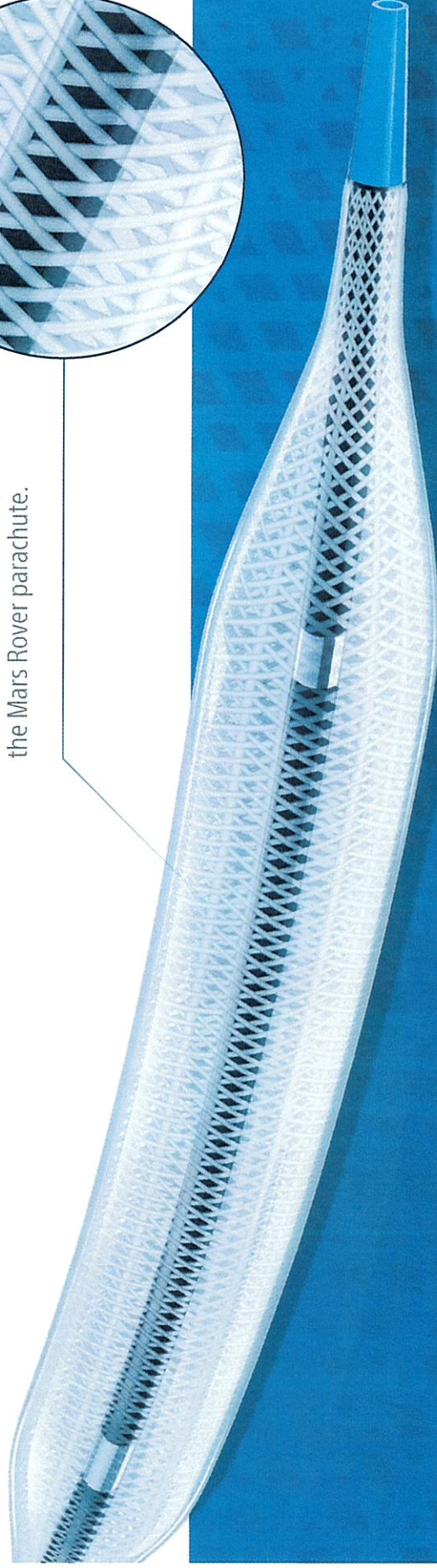


# ULTRA-HIGH PRESSURE

Athletis' patented Vectran™ braided balloon design enables optimized deliverability and ultra-high pressures up to 40 ATM. The unique, non-compliant balloon design enables Athletis to open to the stated diameter even in highly resistant lesions.



Vectran™ is a high-performance material that was used by NASA in the Mars Rover parachute.



## OPTIMIZED DELIVERABILITY

With an ideal blend of track and a low crossing profile, Athletis is designed to reach highly calcified, long, stenotic, or resistant fibrotic lesions, including those commonly found in AV access procedures.



4



# ULTRA-LOW PROFILE

Athletis features a class-leading low lesion entry profile with an 0.042" flexible, tapered tip over an 0.035" guidewire.



**ATHLETIS**  
**0.042"**

**42% LOWER**  
TIP PROFILE COMPARED  
TO COMPETITOR

**COMPETITOR**  
**0.072"\***





# ATHLETIS ORDERING INFORMATION

UPN			Balloon Length (mm)							
6F	7F	8F	20	30	40	60	80	100		
4	50		H74939347040250		H74939347040450	H74939347040650	H74939347040850	H74939347041050		
	75		H74939347040270		H74939347040470	H74939347040670	H74939347040870	H74939347041070		
	50		H74939347050250		H74939347050450	H74939347050650	H74939347050850	H74939347051050		
5	75		H74939347050270		H74939347050470	H74939347050670	H74939347050870	H74939347051070		
	135				H74939347050410					
	50		H74939347060250		H74939347060450	H74939347060650	H74939347060850	H74939347061050		
6	75		H74939347060270		H74939347060470	H74939347060670	H74939347060870	H74939347061070		
	135		H74939347060210		H74939347060410					
	50		H74939347070250		H74939347070450	H74939347070650	H74939347070850	H74939347071050		
7	75		H74939347070270		H74939347070470	H74939347070670	H74939347070870	H74939347071070		
	135		H74939347070210		H74939347070410					
	50		H74939347080250	H74939347080350	H74939347080450	H74939347080650	H74939347080850	H74939347081050		
8	75		H74939347080270	H74939347080370	H74939347080470	H74939347080670	H74939347080870	H74939347081070		
	135		H74939347080210		H74939347080410					
	50		H74939347090250		H74939347090450		H74939347090850			
9	75		H74939347090270		H74939347090470		H74939347090870			
	135				H74939347090410					
	75		H74939347100270		H74939347100470		H74939347100870			
10	135				H74939347100410					
	75		H74939347120270		H74939347120470	H74939347120670				
	135		H74939347120210		H74939347120410	H74939347120610				

## INFLATION DEVICE ORDERING INFORMATION

Encore 40 is the recommended inflation device paired with Athletis. To order, use **UPN M001394472540**.





# Mustang™

## Balloon Dilatation Catheter

- Excellence on every dimension
  - Powerful dilatation: Strength and flexibility up to 24 atm (2431 kPa) rated burst pressure
  - Superior deliverability: Excellent sheath compatibility, low entry and crossing profile, excellent balloon rewinding, excellent trackability and pushability
  - Full size Matrix: 203 options

Catheter Length 40 cm	Order Number Catheter Length 75 cm	Catheter Length 135 cm	Balloon Diameter (mm)	Balloon Length (mm)	Sheath Compatibility (F)*	Rated Burst Pressure (ATM)	Rated Burst Pressure (kPa)	
H74939171030240	H74939171030270	H74939171030210	3	20	5	1.7	24	2431
H74939171030340	H74939171030370	H74939171030310	3	30	5	1.7	24	2431
H74939171030440	H74939171030470	H74939171030410	3	40	5	1.7	24	2431
H74939171030640	H74939171030670	H74939171030610	3	60	5	1.7	24	2431
H74939171030840	H74939171030870	H74939171030810	3	80	5	1.7	24	2431
H74939171031040	H74939171031070	H74939171031010	3	100	5	1.7	24	2431
	H74939171031270	H74939171031210	3	120	5	1.7	24	2431
	H74939171031570	H74939171031510	3	150	5	1.7	24	2431
	H74939171031870	H74939171031810	3	180	5	1.7	24	2431
	H74939171032070	H74939171032010	3	200	5	1.7	24	2431
H74939171040240	H74939171040270	H74939171040210	4	20	5	1.7	24	2431
H74939171040340	H74939171040370	H74939171040310	4	30	5	1.7	24	2431
H74939171040440	H74939171040470	H74939171040410	4	40	5	1.7	24	2431
H74939171040640	H74939171040670	H74939171040610	4	60	5	1.7	24	2431
H74939171040840	H74939171040870	H74939171040810	4	80	5	1.7	24	2431
H74939171041040	H74939171041070	H74939171041010	4	100	5	1.7	24	2431
	H74939171041270	H74939171041210	4	120	5	1.7	24	2431
	H74939171041570	H74939171041510	4	150	5	1.7	24	2431
	H74939171041870	H74939171041810	4	180	5	1.7	24	2431
	H74939171042070	H74939171042010	4	200	5	1.7	24	2431
H74939171050240	H74939171050270	H74939171050210	5	20	5	1.7	24	2431
H74939171050340	H74939171050370	H74939171050310	5	30	5	1.7	24	2431
H74939171050440	H74939171050470	H74939171050410	5	40	5	1.7	24	2431
H74939171050640	H74939171050670	H74939171050610	5	60	5	1.7	24	2431
H74939171050840	H74939171050870	H74939171050810	5	80	5	1.7	24	2431
H74939171051040	H74939171051070	H74939171051010	5	100	5	1.7	24	2431
H74939171051240	H74939171051270	H74939171051210	5	120	5	1.7	24	2431
	H74939171051570	H74939171051510	5	150	5	1.7	24	2431
	H74939171051870	H74939171051810	5	180	5	1.7	24	2431
	H74939171052070	H74939171052010	5	200	5	1.7	24	2431
H74939171060240	H74939171060270	H74939171060210	6	20	5	1.7	24	2431
H74939171060340	H74939171060370	H74939171060310	6	30	5	1.7	24	2431
H74939171060440	H74939171060470	H74939171060410	6	40	5	1.7	24	2431
H74939171060640	H74939171060670	H74939171060610	6	60	5	1.7	24	2431
H74939171060840	H74939171060870	H74939171060810	6	80	5	1.7	24	2431
H74939171061040	H74939171061070	H74939171061010	6	100	5	1.7	24	2431
H74939171061240	H74939171061270	H74939171061210	6	120	5	1.7	22	2229
	H74939171061570	H74939171061510	6	150	5	1.7	22	2229
	H74939171061870	H74939171061810	6	180	5	1.7	22	2229
	H74939171062070	H74939171062010	6	200	5	1.7	22	2229
H74939171070240	H74939171070270	H74939171070210	7	20	5	1.7	20	2026
H74939171070340	H74939171070370	H74939171070310	7	30	5	1.7	20	2026
H74939171070440	H74939171070470	H74939171070410	7	40	5	1.7	20	2026
H74939171070640	H74939171070670	H74939171070610	7	60	5	1.7	20	2026
H74939171070840	H74939171070870	H74939171070810	7	80	5	1.7	20	2026
H74939171071040	H74939171071070	H74939171071010	7	100	5	1.7	20	2026
	H74939171071270	H74939171071210	7	120	5	1.7	18	1823
	H74939171071570	H74939171071510	7	150	5	1.7	18	1823

\*SF = 1.7 mm, 6F = 2.0 mm, 7F = 2.3 mm

Continued next page >





## 2.3 0.035" (0.89 mm) Guidewire Compatible

### Mustang™ Continued

Balloon Dilatation Catheter

Catheter Length 40 cm	Order Number Catheter Length 75 cm	Catheter Length 135 cm	Balloon Diameter (mm)	Balloon Length (mm)	Sheath Compatibility (F)*	Sheath Compatibility (mm)	Rated Burst Pressure (ATM)	Rated Burst Pressure (kPa)
	H74939171071870	H74939171071810	7	180	5	1.7	18	1823
	H74939171072070	H74939171072010	7	200	5	1.7	18	1823
H74939171080240	H74939171080270	H74939171080210	8	20	6	2.0	20	2026
H74939171080340	H74939171080370	H74939171080310	8	30	6	2.0	20	2026
H74939171080440	H74939171080470	H74939171080410	8	40	6	2.0	20	2026
H74939171080640	H74939171080670	H74939171080610	8	60	6	2.0	20	2026
H74939171080840	H74939171080870	H74939171080810	8	80	6	2.0	20	2026
H74939171081040	H74939171081070	H74939171081010	8	100	6	2.0	20	2026
	H74939171081570	H74939171081510	8	150	6	2.0	18	1823
	H74939171081870	H74939171081810	8	180	6	2.0	18	1823
	H74939171082070	H74939171082010	8	200	6	2.0	18	1823
H74939171090240	H74939171090270	H74939171090210	9	20	6	2.0	18	1823
H74939171090340	H74939171090370	H74939171090310	9	30	6	2.0	18	1823
H74939171090440	H74939171090470	H74939171090410	9	40	6	2.0	18	1823
H74939171090640	H74939171090670	H74939171090610	9	60	6	2.0	18	1823
H74939171090840	H74939171090870	H74939171090810	9	80	6	2.0	18	1823
H74939171100240	H74939171100270	H74939171100210	10	20	6	2.0	14	1418
H74939171100340	H74939171100370	H74939171100310	10	30	6	2.0	14	1418
H74939171100440	H74939171100470	H74939171100410	10	40	6	2.0	14	1418
H74939171100640	H74939171100670	H74939171100610	10	60	6	2.0	14	1418
H74939171100840	H74939171100870	H74939171100810	10	80	6	2.0	14	1418
H74939171120240	H74939171120260	H74939171120210	12	20	7	2.3	14	1418
H74939171120340	H74939171120370	H74939171120310	12	30	7	2.3	14	1418
H74939171120440	H74939171120470	H74939171120410	12	40	7	2.3	14	1418
H74939171120640	H74939171120670	H74939171120610	12	60	7	2.3	14	1418
H74939171120840	H74939171120870	H74939171120810	12	80	7	2.3	14	1418

\*7F = 2.3 mm

### Charger™

PTA Balloon Dilatation Catheter

- Boston Scientific's Charger™ is a steadfast 0.035\*\* Balloon Dilatation Catheter designed to deliver results in both routine and challenging cases. It offers excellent push and track, a low profile, rapid deflation, and a full range of sizes

Order Number		Balloon Diameter (mm)	Balloon Length (mm)	Sheath F**	RBP (ATM)	RBP (kPa)
Shaft 75 cm	Shaft 135 cm					
H74939206030270	H74939206030210	3	20	5	20	2026
H74939206030470	H74939206030410	3	40	5	20	2026
H74939206030670		3	60	5	20	2026
	H74939206030810	3	80	5	20	2026
	H74939206031010	3	100	5	20	2026
	H74939206031210	3	120	5	20	2026
	H74939206031510	3	150	5	20	2026
	H74939206032010	3	200	5	20	2026
H74939206040270	H74939206040210	4	20	5	20	2026
H74939206040470	H74939206040410	4	40	5	20	2026
H74939206040670	H74939206040610	4	60	5	20	2026
H74939206040870	H74939206040810	4	80	5	20	2026
H74939206041070	H74939206041010	4	100	5	20	2026
	H74939206041210	4	120	5	20	2026

\* 0.035" = 0.89 mm, 0.040" = 1.02 mm, 0.065" = 1.65 mm

\*\* 5F = 1.67 mm, 6F = 2 mm, 7F = 2.33 mm

Continued next page >



Ordering Information - 34  
Peripheral Interventions

Boston  
Scientific



**MUSTANG™** 0.035" Balloon Dilatation Catheter

# EXCELLENCE ON EVERY DIMENSION

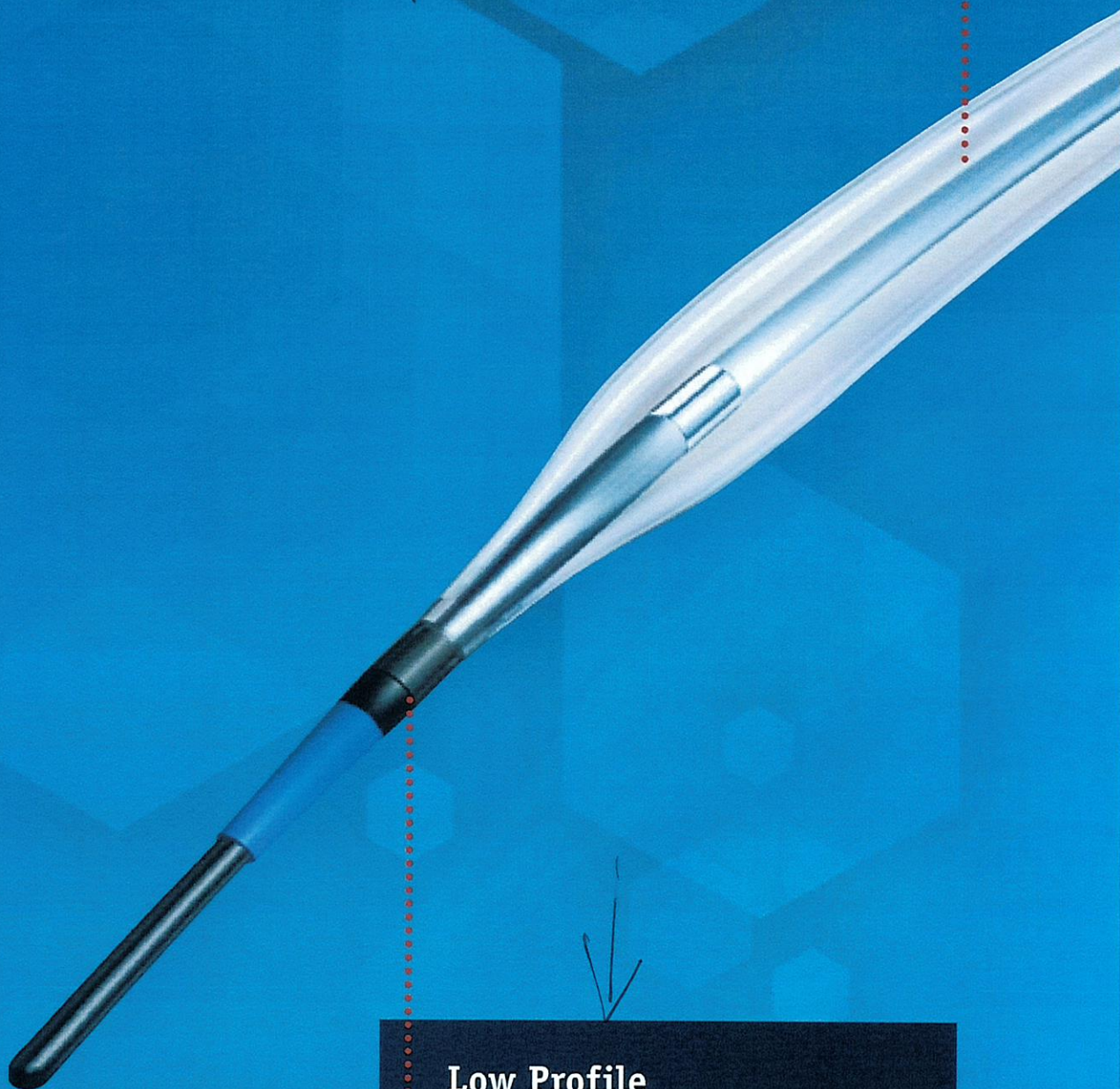


\* 5F = 1.67 mm  
24 ATM = 2431 kPa  
0.035" = 0.89 mm



## Deliverable High Pressure

- + 24 atmosphere (2431 kPa) rated burst with a low profile
- + NyBax™ balloon material enables great trackability and high pressure in the same balloon



## Low Profile

- + Lesion entry only 15% larger than the wire
- + 7 x 200 through 5 F (1.67 mm)
- + 10 x 80 through 6 F (2.00 mm)





### **Broadest Size Matrix**

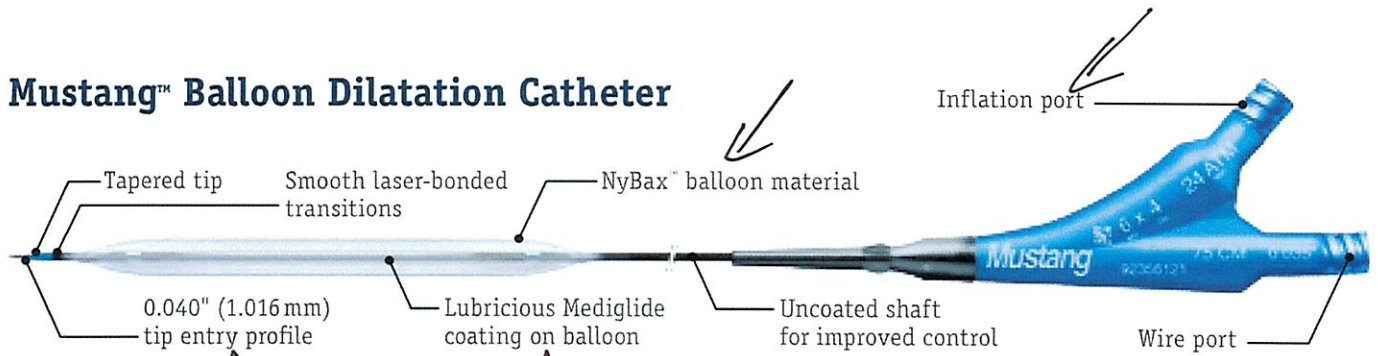
- + Balloon lengths 20–200 mm
- + Diameters 3–12 mm
- + Shafts 40 cm, 75 cm, 135 cm

## **Only one balloon provides total performance.**

With superior cross and track, powerful dilatation, longer lengths, and smaller sheath sizes, Mustang™ is the 0.035" (0.89 mm) workhorse balloon that offers excellence across the board.



# Mustang™ Balloon Dilatation Catheter



40 cm	Catheter Length 75 cm	135 cm	Balloon Diameter (mm)	Balloon Length (mm)	Sheath (F / mm)	ATM	RBP kPa	Catheter Size (F / mm)
H74939171030240	H74939171030270	H74939171030210	3.0	20	5 / 1.67	24	2431	5.3 / 1.77
H74939171030340	H74939171030370	H74939171030310	3.0	30	5 / 1.67	24	2431	5.3 / 1.77
H74939171030440	H74939171030470	H74939171030410	3.0	40	5 / 1.67	24	2431	5.3 / 1.77
H74939171030640	H74939171030670	H74939171030610	3.0	60	5 / 1.67	24	2431	5.3 / 1.77
H74939171030840	H74939171030870	H74939171030810	3.0	80	5 / 1.67	24	2431	5.3 / 1.77
H74939171031040	H74939171031070	H74939171031010	3.0	100	5 / 1.67	24	2431	5.3 / 1.77
—	H74939171031270	H74939171031210	3.0	120	5 / 1.67	24	2431	5.3 / 1.77
—	H74939171031570	H74939171031510	3.0	150	5 / 1.67	24	2431	5.3 / 1.77
—	H74939171031870	H74939171031810	3.0	180	5 / 1.67	24	2431	5.3 / 1.77
—	H74939171032070	H74939171032010	3.0	200	5 / 1.67	24	2431	5.3 / 1.77
H74939171040240	H74939171040270	H74939171040210	4.0	20	5 / 1.67	24	2431	5.3 / 1.77
H74939171040340	H74939171040370	H74939171040310	4.0	30	5 / 1.67	24	2431	5.3 / 1.77
H74939171040440	H74939171040470	H74939171040410	4.0	40	5 / 1.67	24	2431	5.3 / 1.77
H74939171040640	H74939171040670	H74939171040610	4.0	60	5 / 1.67	24	2431	5.3 / 1.77
H74939171040840	H74939171040870	H74939171040810	4.0	80	5 / 1.67	24	2431	5.3 / 1.77
H74939171041040	H74939171041070	H74939171041010	4.0	100	5 / 1.67	24	2431	5.3 / 1.77
—	H74939171041270	H74939171041210	4.0	120	5 / 1.67	24	2431	5.3 / 1.77
—	H74939171041570	H74939171041510	4.0	150	5 / 1.67	24	2431	5.3 / 1.77
—	H74939171041870	H74939171041810	4.0	180	5 / 1.67	24	2431	5.3 / 1.77
—	H74939171042070	H74939171042010	4.0	200	5 / 1.67	24	2431	5.3 / 1.77
H74939171050240	H74939171050270	H74939171050210	5.0	20	5 / 1.67	24	2431	5.3 / 1.77
H74939171050340	H74939171050370	H74939171050310	5.0	30	5 / 1.67	24	2431	5.3 / 1.77
H74939171050440	H74939171050470	H74939171050410	5.0	40	5 / 1.67	24	2431	5.3 / 1.77
H74939171050640	H74939171050670	H74939171050610	5.0	60	5 / 1.67	24	2431	5.3 / 1.77
H74939171050840	H74939171050870	H74939171050810	5.0	80	5 / 1.67	24	2431	5.3 / 1.77
H74939171051040	H74939171051070	H74939171051010	5.0	100	5 / 1.67	24	2431	5.3 / 1.77
H74939171051240	H74939171051270	H74939171051210	5.0	120	5 / 1.67	24	2431	5.3 / 1.77
—	H74939171051570	H74939171051510	5.0	150	5 / 1.67	24	2431	5.3 / 1.77
—	H74939171051870	H74939171051810	5.0	180	5 / 1.67	24	2431	5.3 / 1.77
—	H74939171052070	H74939171052010	5.0	200	5 / 1.67	24	2431	5.3 / 1.77
H74939171060240	H74939171060270	H74939171060210	6.0	20	5 / 1.67	24	2431	5.3 / 1.77
H74939171060340	H74939171060370	H74939171060310	6.0	30	5 / 1.67	24	2431	5.3 / 1.77
H74939171060440	H74939171060470	H74939171060410	6.0	40	5 / 1.67	24	2431	5.3 / 1.77
H74939171060640	H74939171060670	H74939171060610	6.0	60	5 / 1.67	24	2431	5.3 / 1.77
H74939171060840	H74939171060870	H74939171060810	6.0	80	5 / 1.67	24	2431	5.3 / 1.77
H74939171061040	H74939171061070	H74939171061010	6.0	100	5 / 1.67	24	2431	5.3 / 1.77
H74939171061240	H74939171061270	H74939171061210	6.0	120	5 / 1.67	22	2431	5.3 / 1.77
—	H74939171061570	H74939171061510	6.0	150	5 / 1.67	22	2431	5.3 / 1.77
—	H74939171061870	H74939171061810	6.0	180	5 / 1.67	22	2431	5.3 / 1.77
—	H74939171062070	H74939171062010	6.0	200	5 / 1.67	22	2431	5.3 / 1.77
H74939171070240	H74939171070270	H74939171070210	7.0	20	5 / 1.67	20	2027	5.3 / 1.77
H74939171070340	H74939171070370	H74939171070310	7.0	30	5 / 1.67	20	2027	5.3 / 1.77
H74939171070440	H74939171070470	H74939171070410	7.0	40	5 / 1.67	20	2027	5.3 / 1.77
H74939171070640	H74939171070670	H74939171070610	7.0	60	5 / 1.67	20	2027	5.3 / 1.77
H74939171070840	H74939171070870	H74939171070810	7.0	80	5 / 1.67	20	2027	5.3 / 1.77
H74939171071040	H74939171071070	H74939171071010	7.0	100	5 / 1.67	20	2027	5.3 / 1.77
—	H74939171071270	H74939171071210	7.0	120	5 / 1.67	18	1823	5.3 / 1.77
—	H74939171071570	H74939171071510	7.0	150	5 / 1.67	18	1823	5.3 / 1.77
—	H74939171071870	H74939171071810	7.0	180	5 / 1.67	18	1823	5.3 / 1.77
—	H74939171072070	H74939171072010	7.0	200	5 / 1.67	18	1823	5.3 / 1.77
H74939171080240	H74939171080270	H74939171080210	8.0	20	6 / 2.00	20	2027	5.3 / 1.77
H74939171080340	H74939171080370	H74939171080310	8.0	30	6 / 2.00	20	2027	5.3 / 1.77
H74939171080440	H74939171080470	H74939171080410	8.0	40	6 / 2.00	20	2027	5.3 / 1.77
H74939171080640	H74939171080670	H74939171080610	8.0	60	6 / 2.00	20	2027	5.3 / 1.77
H74939171080840	H74939171080870	H74939171080810	8.0	80	6 / 2.00	20	2027	5.3 / 1.77
H74939171081040	H74939171081070	H74939171081010	8.0	100	6 / 2.00	20	2027	5.3 / 1.77
—	H74939171081270	H74939171081210	8.0	120	6 / 2.00	18	1823	5.3 / 1.77
—	H74939171081570	H74939171081510	8.0	150	6 / 2.00	18	1823	5.8 / 1.93
—	H74939171081870	H74939171081810	8.0	180	6 / 2.00	18	1823	5.8 / 1.93
—	H74939171082070	H74939171082010	8.0	200	6 / 2.00	18	1823	5.8 / 1.93
H74939171090240	H74939171090270	H74939171090210	9.0	20	6 / 2.00	18	1823	5.8 / 1.93
H74939171090340	H74939171090370	H74939171090310	9.0	30	6 / 2.00	18	1823	5.8 / 1.93
H74939171090440	H74939171090470	H74939171090410	9.0	40	6 / 2.00	18	1823	5.8 / 1.93
H74939171090640	H74939171090670	H74939171090610	9.0	60	6 / 2.00	18	1823	5.8 / 1.93
H74939171090840	H74939171090870	H74939171090810	9.0	80	6 / 2.00	18	1823	5.8 / 1.93
H74939171100240	H74939171100270	H74939171100210	10.0	20	6 / 2.00	14	1419	5.8 / 1.93
H74939171100340	H74939171100370	H74939171100310	10.0	30	6 / 2.00	14	1419	5.8 / 1.93
H74939171100440	H74939171100470	H74939171100410	10.0	40	6 / 2.00	14	1419	5.8 / 1.93
H74939171100640	H74939171100670	H74939171100610	10.0	60	6 / 2.00	14	1419	5.8 / 1.93
H74939171100840	H74939171100870	H74939171100810	10.0	80	6 / 2.00	14	1419	5.8 / 1.93
H74939171102040	H74939171102070	H74939171102010	12.0	20	7 / 2.33	14	1419	5.8 / 1.93
H74939171102340	H74939171102370	H74939171102310	12.0	30	7 / 2.33	14	1419	5.8 / 1.93
H74939171102440	H74939171102470	H74939171102410	12.0	40	7 / 2.33	14	1419	5.8 / 1.93
H74939171102640	H74939171102670	H74939171102610	12.0	60	7 / 2.33	14	1419	5.8 / 1.93
H74939171102840	H74939171102870	H74939171102810	12.0	80	7 / 2.33	14	1419	5.8 / 1.93

**Boston Scientific**  
Advancing science for life™

www.bostonscientific.eu

All cited trademarks are the property of their respective owners. CAUTION: The law restricts these devices to sale by or on the order of a physician. Indications, contraindications, warnings and instructions for use can be found in the product labeling supplied with each device. Information for the use only in countries with applicable health authority product registrations. This material is not intended to be used or distributed in France.

PI-380902-AA MAR 2016 Printed in Germany by medicalvision.

© 2016 Boston Scientific Corporation or its affiliates. All rights reserved.  
DINPER4678EA

12



## 6.2 Self-Expandable Stenting

**Epic™**

Self-Expanding Nitinol Vascular Stent

- **Exceptional flexibility.** Hybrid Architecture Design with open- and closed-cell geometry is engineered to provide flexibility and deployment uniformity
- **Balanced radial force.** Macro and Micro Struts are engineered to work in tandem for balanced force – even in tortuous vasculature
- **Excellent deployment accuracy.** Intuitive Delivery System and Radiopaque Markers facilitate accurate deployment
- **Fracture resistance.** Top-Grade Nitinol with Meticulous Surface Finishing and Polishing contribute to superior fracture resistance

Order Number		Diameter (mm)	Length (mm)	Sheath Compatibility (F/mm)
75 cm shaft	120 cm shaft			
H74939054052070	H74939054052020	5	20	6F / 2.0
H74939054053070	H74939054053020	5	30	6F / 2.0
H74939054054070	H74939054054020	5	40	6F / 2.0
H74939054055070	H74939054055020	5	50	6F / 2.0
H74939054056070	H74939054056020	5	60	6F / 2.0
H74939054057070	H74939054057020	5	70	6F / 2.0
H74939054058070	H74939054058020	5	80	6F / 2.0
H74939054051070	H74939054051020	5	100	6F / 2.0
H74939054051270	H74939054051220	5	120	6F / 2.0
H74939054062070	H74939054062020	6	20	6F / 2.0
H74939054063070	H74939054063020	6	30	6F / 2.0
H74939054064070	H74939054064020	6	40	6F / 2.0
H74939054065070	H74939054065020	6	50	6F / 2.0
H74939054066070	H74939054066020	6	60	6F / 2.0
H74939054067070	H74939054067020	6	70	6F / 2.0
H74939054068070	H74939054068020	6	80	6F / 2.0
H74939054061070	H74939054061020	6	100	6F / 2.0
H74939054061270	H74939054061220	6	120	6F / 2.0
H74939054072070	H74939054072020	7	20	6F / 2.0
H74939054073070	H74939054073020	7	30	6F / 2.0
H74939054074070	H74939054074020	7	40	6F / 2.0
H74939054075070	H74939054075020	7	50	6F / 2.0
H74939054076070	H74939054076020	7	60	6F / 2.0
H74939054077070	H74939054077020	7	70	6F / 2.0
H74939054078070	H74939054078020	7	80	6F / 2.0
H74939054071070	H74939054071020	7	100	6F / 2.0
H74939054071270	H74939054071220	7	120	6F / 2.0
H74939054082070	H74939054082020	8	20	6F / 2.0
H74939054083070	H74939054083020	8	30	6F / 2.0
H74939054084070	H74939054084020	8	40	6F / 2.0
H74939054085070	H74939054085020	8	50	6F / 2.0

Continued next page >





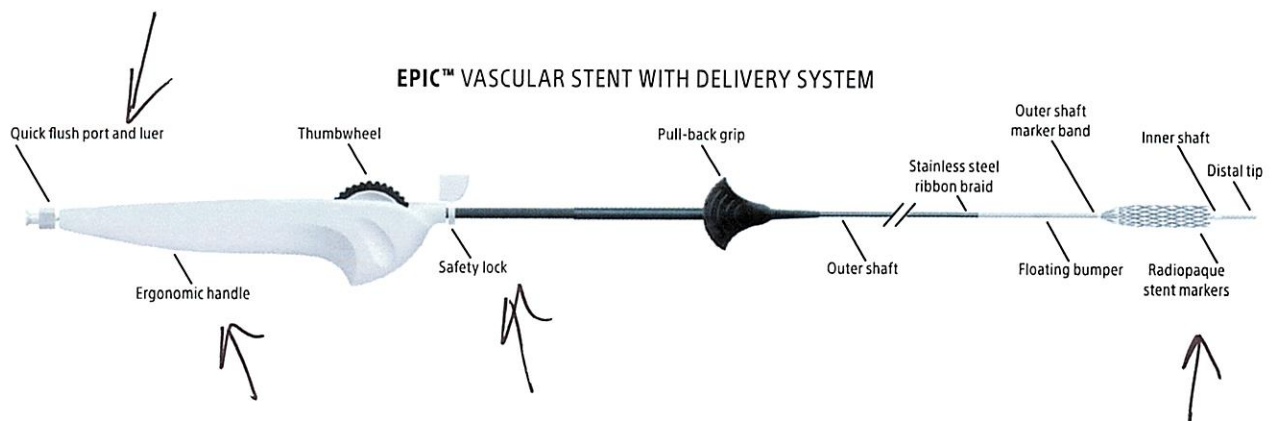
## 6.2 Self-Expandable Stenting

### Epic™ Continued

Self-Expanding Nitinol Vascular Stent

Order Number		Diameter (mm)	Length (mm)	Sheath Compatibility (F/mm)
75 cm shaft	120 cm shaft			
H74939054086070	H74939054086020	8	60	6F / 2.0
H74939054087070	H74939054087020	8	70	6F / 2.0
H74939054088070	H74939054088020	8	80	6F / 2.0
H74939054081070	H74939054081020	8	100	6F / 2.0
H74939054081270	H74939054081220	8	120	6F / 2.0
H74939054092070	H74939054092020	9	20	6F / 2.0
H74939054093070	H74939054093020	9	30	6F / 2.0
H74939054094070	H74939054094020	9	40	6F / 2.0
H74939054095070	H74939054095020	9	50	6F / 2.0
H74939054096070	H74939054096020	9	60	6F / 2.0
H74939054097070	H74939054097020	9	70	6F / 2.0
H74939054098070	H74939054098020	9	80	6F / 2.0
H74939054091070	H74939054091020	9	100	6F / 2.0
H74939054102070	H74939054102020	10	20	6F / 2.0
H74939054103070	H74939054103020	10	30	6F / 2.0
H74939054104070	H74939054104020	10	40	6F / 2.0
H74939054105070	H74939054105020	10	50	6F / 2.0
H74939054106070	H74939054106020	10	60	6F / 2.0
H74939054107070	H74939054107020	10	70	6F / 2.0
H74939054108070	H74939054108020	10	80	6F / 2.0
H74939054101070	H74939054101020	10	100	6F / 2.0
H74939054123070	H74939054123020	12	30	6F / 2.0
H74939054124070	H74939054124020	12	40	6F / 2.0
H74939054125070	H74939054125020	12	50	6F / 2.0
H74939054126070	H74939054126020	12	60	6F / 2.0
H74939054143070	H74939054143020	14	30	6F / 2.0
H74939054144070	H74939054144020	14	40	6F / 2.0
H74939054145070	H74939054145020	14	50	6F / 2.0
H74939054146070	H74939054146020	14	60	6F / 2.0

GuideWire Compatibility 0.035" (0.90 mm) Over-The-Wire





# Epic<sup>TM</sup>

Self-Expanding Nitinol Vascular Stent with Delivery System

Versatility  
without  
Compromise

↓  
6F sheath is compatible with all stent sizes,  
with room to inject contrast.

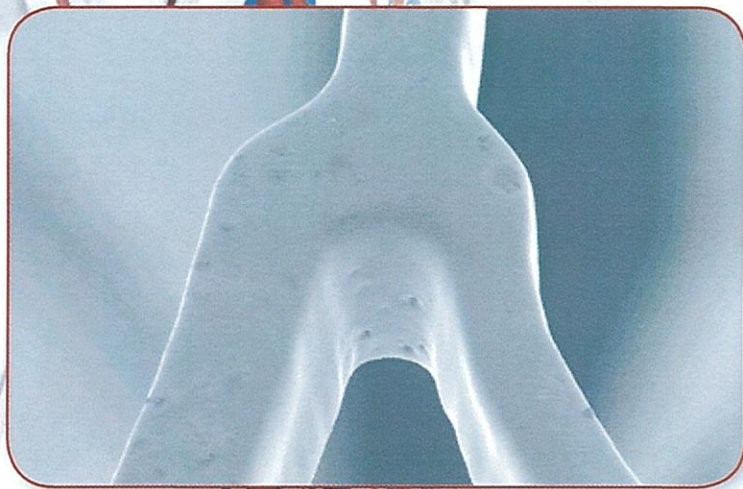
Boston  
Scientific  
Delivering what's next.™

75



## Versatility Without Compromise

Designed for optimal balance  
between force and flexibility, the  
Epic™ Nitinol Stent System is built  
to deliver accurately and easily.  
For true 6F (2.0 mm) performance  
in all sizes, look to the Epic  
Nitinol Stent System.



### HIGH\* STENT INTEGRITY

- Enhanced electro-polishing and surface finishing processes add to stent integrity and durability and contribute to a low fracture rate
- Balanced stent platform allows for optimal radial force without compromising flexibility\*





## BALANCED DESIGN.

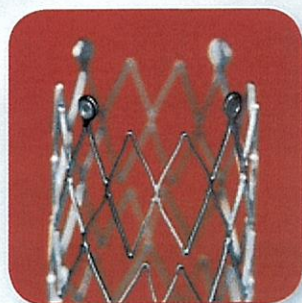
- Radial Tandem Architecture™ stent design provides stent flexibility while maintaining predictable force characteristics across the size matrix
- Excellent balance of flexibility, conformability and kink resistance
- Single flushing port simplifies system prep and flushing procedures



# Easy Deployment.\* Accurate Placement.\*

## EXCELLENT DELIVERABILITY

- A 6F (2.0 mm) system profile, across the range, provides room for contrast injections, providing excellent anatomical visibility during stent delivery
- Strong exterior and interior sheath wall facilitate trackability and pushability
- Up to a 14 mm stent is deliverable through a 6F (2.0 mm) sheath

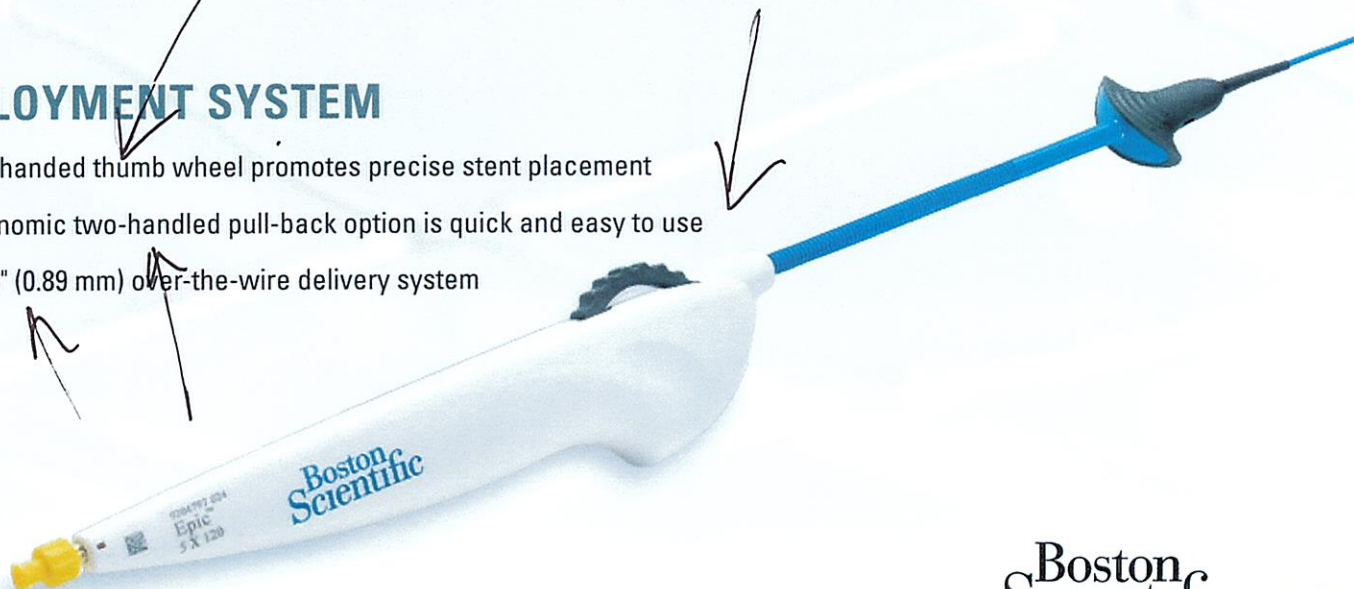


## ACCURATE PLACEMENT

- Distal and proximal radiopaque markers enhance Stent visualization
- Marker band on delivery catheter promotes precise positioning
- Robust catheter is designed to reduce stent movement during deployment and minimize stent jumping

## DEPLOYMENT SYSTEM

- One-handed thumb wheel promotes precise stent placement
- Ergonomic two-handed pull-back option is quick and easy to use
- 0.035" (0.89 mm) over-the-wire delivery system



\* Data on file at Boston Scientific

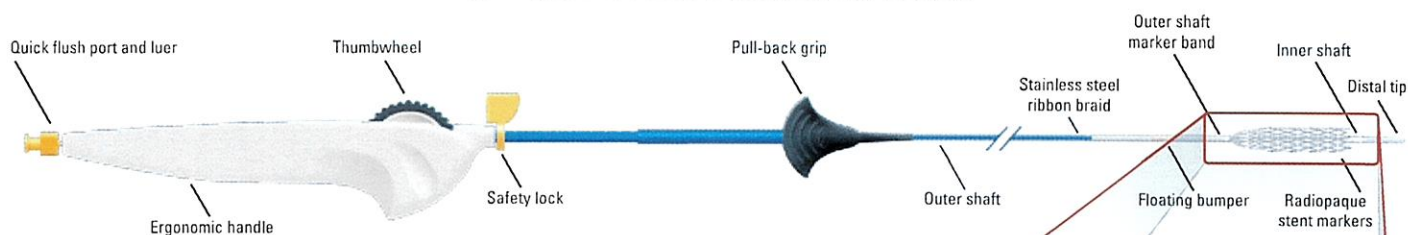


# ORDERING CODES

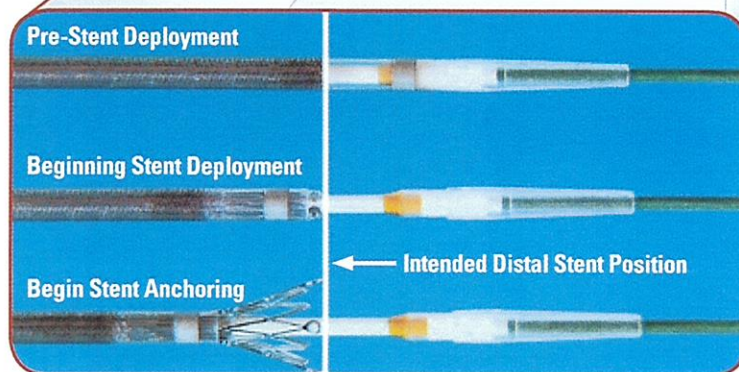
UPN Short Instrument 75 cm	UPN Long Instrument 120 cm	Stent Diameter (mm)	Reference Vessel Diameter (mm)	Stent Length (mm)	Sheath Size (F / mm)	Guidewire Compatibility (inch / mm)
H74939054052070	H74939054052020	5	4.0	20	6 / 2.0	0.035 / 0.89
H74939054053070	H74939054053020	5	4.0	30	6 / 2.0	0.035 / 0.89
H74939054054070	H74939054054020	5	4.0	40	6 / 2.0	0.035 / 0.89
H74939054055070	H74939054055020	5	4.0	50	6 / 2.0	0.035 / 0.89
H74939054056070	H74939054056020	5	4.0	60	6 / 2.0	0.035 / 0.89
H74939054057070	H74939054057020	5	4.0	70	6 / 2.0	0.035 / 0.89
H74939054058070	H74939054058020	5	4.0	80	6 / 2.0	0.035 / 0.89
H74939054051070	H74939054051020	5	4.0	100	6 / 2.0	0.035 / 0.89
H74939054051270	H74939054051220	5	4.0	120	6 / 2.0	0.035 / 0.89
H74939054062070	H74939054062020	6	4.0 - 5.0	20	6 / 2.0	0.035 / 0.89
H74939054063070	H74939054063020	6	4.0 - 5.0	30	6 / 2.0	0.035 / 0.89
H74939054064070	H74939054064020	6	4.0 - 5.0	40	6 / 2.0	0.035 / 0.89
H74939054065070	H74939054065020	6	4.0 - 5.0	50	6 / 2.0	0.035 / 0.89
H74939054066070	H74939054066020	6	4.0 - 5.0	60	6 / 2.0	0.035 / 0.89
H74939054067070	H74939054067020	6	4.0 - 5.0	70	6 / 2.0	0.035 / 0.89
H74939054068070	H74939054068020	6	4.0 - 5.0	80	6 / 2.0	0.035 / 0.89
H74939054061070	H74939054061020	6	4.0 - 5.0	100	6 / 2.0	0.035 / 0.89
H74939054061270	H74939054061220	6	4.0 - 5.0	120	6 / 2.0	0.035 / 0.89
H74939054072070	H74939054072020	7	5.0 - 6.0	20	6 / 2.0	0.035 / 0.89
H74939054073070	H74939054073020	7	5.0 - 6.0	30	6 / 2.0	0.035 / 0.89
H74939054074070	H74939054074020	7	5.0 - 6.0	40	6 / 2.0	0.035 / 0.89
H74939054075070	H74939054075020	7	5.0 - 6.0	50	6 / 2.0	0.035 / 0.89
H74939054076070	H74939054076020	7	5.0 - 6.0	60	6 / 2.0	0.035 / 0.89
H74939054077070	H74939054077020	7	5.0 - 6.0	70	6 / 2.0	0.035 / 0.89
H74939054078070	H74939054078020	7	5.0 - 6.0	80	6 / 2.0	0.035 / 0.89
H74939054071070	H74939054071020	7	5.0 - 6.0	100	6 / 2.0	0.035 / 0.89
H74939054071270	H74939054071220	7	5.0 - 6.0	120	6 / 2.0	0.035 / 0.89
H74939054082070	H74939054082020	8	6.0 - 7.0	20	6 / 2.0	0.035 / 0.89
H74939054083070	H74939054083020	8	6.0 - 7.0	30	6 / 2.0	0.035 / 0.89
H74939054084070	H74939054084020	8	6.0 - 7.0	40	6 / 2.0	0.035 / 0.89
H74939054085070	H74939054085020	8	6.0 - 7.0	50	6 / 2.0	0.035 / 0.89
H74939054086070	H74939054086020	8	6.0 - 7.0	60	6 / 2.0	0.035 / 0.89
H74939054087070	H74939054087020	8	6.0 - 7.0	70	6 / 2.0	0.035 / 0.89
H74939054088070	H74939054088020	8	6.0 - 7.0	80	6 / 2.0	0.035 / 0.89
H74939054081070	H74939054081020	8	6.0 - 7.0	100	6 / 2.0	0.035 / 0.89
H74939054081270	H74939054081220	8	6.0 - 7.0	120	6 / 2.0	0.035 / 0.89
H74939054092070	H74939054092020	9	7.0 - 8.0	20	6 / 2.0	0.035 / 0.89
H74939054093070	H74939054093020	9	7.0 - 8.0	30	6 / 2.0	0.035 / 0.89
H74939054094070	H74939054094020	9	7.0 - 8.0	40	6 / 2.0	0.035 / 0.89
H74939054095070	H74939054095020	9	7.0 - 8.0	50	6 / 2.0	0.035 / 0.89
H74939054096070	H74939054096020	9	7.0 - 8.0	60	6 / 2.0	0.035 / 0.89
H74939054097070	H74939054097020	9	7.0 - 8.0	70	6 / 2.0	0.035 / 0.89
H74939054098070	H74939054098020	9	7.0 - 8.0	80	6 / 2.0	0.035 / 0.89
H74939054091070	H74939054091020	9	7.0 - 8.0	100	6 / 2.0	0.035 / 0.89
H74939054102070	H74939054102020	10	8.0 - 9.0	20	6 / 2.0	0.035 / 0.89
H74939054103070	H74939054103020	10	8.0 - 9.0	30	6 / 2.0	0.035 / 0.89
H74939054104070	H74939054104020	10	8.0 - 9.0	40	6 / 2.0	0.035 / 0.89
H74939054105070	H74939054105020	10	8.0 - 9.0	50	6 / 2.0	0.035 / 0.89
H74939054106070	H74939054106020	10	8.0 - 9.0	60	6 / 2.0	0.035 / 0.89
H74939054107070	H74939054107020	10	8.0 - 9.0	70	6 / 2.0	0.035 / 0.89
H74939054108070	H74939054108020	10	8.0 - 9.0	80	6 / 2.0	0.035 / 0.89
H74939054101070	H74939054101020	10	8.0 - 9.0	100	6 / 2.0	0.035 / 0.89
H74939054123070	H74939054123020	12	9.0 - 11.0	30	6 / 2.0	0.035 / 0.89
H74939054124070	H74939054124020	12	9.0 - 11.0	40	6 / 2.0	0.035 / 0.89
H74939054125070	H74939054125020	12	9.0 - 11.0	50	6 / 2.0	0.035 / 0.89
H74939054126070	H74939054126020	12	9.0 - 11.0	60	6 / 2.0	0.035 / 0.89
H74939054143070	H74939054143020	14	11.0 - 13.0	30	6 / 2.0	0.035 / 0.89
H74939054144070	H74939054144020	14	11.0 - 13.0	40	6 / 2.0	0.035 / 0.89
H74939054145070	H74939054145020	14	11.0 - 13.0	50	6 / 2.0	0.035 / 0.89
H74939054146070	H74939054146020	14	11.0 - 13.0	60	6 / 2.0	0.035 / 0.89



**EPIC VASCULAR STENT WITH DELIVERY SYSTEM**



**OPTIMAL DESIGN  
CHARACTERISTICS  
AIDING PLACEMENT  
PRECISION**



Prior to use, please see the complete "Directions for Use" for more information on Indications, Contraindications, Warnings, Precautions, Adverse Events and Operator's Instructions.

**European Distribution Centre –**

**The Netherlands**

T: +31 45 54 67 700 F: +31 45 54 67 800

**European Headquarters –**

**Paris**

T: +33 1 57 66 80 00 F: +33 1 57 66 84 00

**Argentina (Freephone)**

T: 0800 555 2678 F: +54 11 4896 8517

**Australia/New Zealand**

T: +61 2 8063 8100 F: +61 2 9330 1404

**Austria**

T: +43 1 60 810 F: +43 1 60 810 60

**Belgium (Freephone)**

T: 0800 94 494 F: 0800 93 343

**Brazil**

T: +55 11 5502 8500 F: +55 11 5103 2212

**Canada**

T: +1 855 359 9691 F: +1 888 575 7396

**Chile**

T: +562 445 4904 F: +562 445 4915

**China – Beijing**

T: +86 10 6525 1588 F: +86 10 8525 1566

**China – Guangzhou**

T: +86 20 8767 9791 F: +86 20 8767 9789

**China – Shanghai**

T: +86 21 6141 5959 F: +86 21 6141 5900

**Colombia**

T: +57 1 629 5045 F: +57 1 612 4761

**Czech Republic**

T: +420 296 331 901 F: +420 296 331 935

**Denmark (Freephone)**

T: 80 20 80 02 F: 80 30 80 05

**Eire (Freephone)**

T: 1600 562 969 F: 1800 882 968

**Finland**

T: +358 20 762 8882 F: +358 20 762 8883

**France**

T: +33 1 39 30 49 00 F: +33 1 39 30 49 01

**Germany (Freephone)**

T: 08000 723300 F: 08000 723319

**Greece**

T: +30 210 9542 300 F: +30 210 9542 310

**Hong Kong**

T: +852 2969 7100 F: +852 2563 5276

**Hungary**

T: +36 1 456 30 40 F: +36 1 456 30 41

**India – Bangalore**

T: +91 80 2207 5153 F: +91 80 2207 5153

**India – Chennai**

T: +91 44 2220 1879 F: +91 44 2220 0716

**India – Delhi**

T: +91 11 4243 2222 F: +91 11 2610 0809

**India – Mumbai**

T: +91 22 4030 9165 F: +91 22 4040 9199

**Italy**

T: +39 010 60 60 1 F: +39 010 60 60 200

**Korea**

T: +82 2 3476 2121 F: +82 2 3476 1776

**Mexico**

T: +52 55 5687 63 90 F: +52 55 5687 62 28

**Middle East/Gulf/North Africa**

T: +961 1 805 410 F: +961 1 805 445

**The Netherlands**

T: +31 30 602 55 44 F: +31 30 602 55 05

**Norway (Freephone)**

T: 800 104 04 F: 800 101 90

**Poland**

T: +48 22 435 14 14 F: +48 22 435 14 10

**Portugal**

T: +351 1 381 25 40 F: +351 21 381 25 58

**South Africa**

T: +27 11 840 8600 F: +27 11 463 0077

**South East Asia – Malaysia**

T: +60 3 2263 5813 F: +60 3 2284 3813

**South East Asia – Philippines**

T: +63 2 687 3239 F: +63 2 687 3047

**South East Asia – Singapore**

T: +65 6418 8898 F: +65 6418 8899

**South East Asia – Thailand**

T: +66 2 6380 100 F: +66 2 6380 400

**South East Europe**

T: +30 210 9542 300 F: +30 210 9542 310

**Spain – Barcelona**

T: +34 93 444 72 00 F: +34 93 405 90 45

**Spain – Madrid**

T: +34 901 11 12 15 F: +34 91 319 50 03

**Sweden**

T: +46 42 25 69 00 F: +46 42 25 69 69

**Switzerland**

T: +41 32 626 57 00 F: +41 32 626 57 01

**Taiwan**

T: +886 2 2747 7278 F: +886 2 2747 7270

**Turkey – Istanbul**

T: +90 216 464 36 66 F: +90 216 464 36 67

**UK (Freephone)**

T: 0844 800 4512 F: 0644 800 4513

**Uruguay**

T: +59 82 500 6212 F: +59 82 900 6212

**Venezuela**

T: +58 212 959 8106 F: +58 212 959 5328



### DC Bead LUMI

Radiopaque Embolic Drug-Eluting Bead

- DC Bead LUMI Radiopaque Embolic Drug-Eluting Bead are precisely calibrated, radiopaque embolic drug eluting beads developed using the same core chemistry as the clinically proven DC Bead Embolic Drug-Eluting Bead.
- DC Bead LUMI Radiopaque Embolic Drug-Eluting Bead contain a covalently bound radiopaque moiety which means they are inherently radiopaque and visible under imaging (Computed Tomography [CT], Cone Beam Computed Tomography [CBCT] and Fluoroscopy).

#### Presentation

- Single-unit pack
- 10 ml vial containing 2 ml beads in physiological buffered saline solution (total volume approx 8 ml)
- Each vial stopper-sealed with an aluminium cap and colour-coded lid
- 24-month shelf-life from date of manufacture
- Steam sterilised Particles

Order Code	Volume of Beads	Size (µm)
RO2D001	2 ml	70 - 150



### Contour™ Embolisation Particles

- PVA flakes that are indicated for the embolization of hypervascular tumors including leiomyoma uteri and arteriovenous malformations (AVM)
- Available in dry vials and a range of embolic sizes to help promote procedural flexibility

Order Number	Vials per Box	Particle Size Range (µm)
M0017600121	2	45 - 150
M0017600151	5	45 - 150
M0017600221	2	150 - 250
M0017600251	5	150 - 250
M0017600321	2	250 - 355
M0017600351	5	250 - 355
M0017600421	2	355 - 500
M0017600451	5	355 - 500
M0017600621	2	500 - 710
M0017600651	5	500 - 710
M0017600821	2	710 - 1000
M0017600851	5	710 - 1000
M0017601121	2	1000 - 1180
M0017601151	5	1000 - 1180





## 13.2 Embolic Agents & Occlusion Balloons

### EMBOZENE™

Microspheres / Mikrosphären / Microesferas

- Embozene™ Microspheres are indicated for embolization of:
  - Hypervascular tumors, incl. Uterine Fibroid Embolization (UFE) and Hepatocellular Carcinoma
  - Arteriovenous malformations (A.V.M.)
  - Benign Prostate Hyperplasia (BPH)
  - Tumors of head, neck, torso, and skeletal system
- Broad range of 10 different sizes
- Tight calibration with 95 % of the microspheres within the stated size variance
- Color-coded to enhance visualization and aid in size recognition
- Sold as single syringe units
- 3-year shelf life from date of manufacture
- Embozene™ Mikrosphären sind indiziert für die Embolisierung von:
  - Hypervaskulären Tumoren, inkl. Gebärmuttermyomembolisierungen (UFE) und hepatozellulären Karzinomen
  - Arteriovenösen Malformationen (AVM)
  - Benigner Prostatahyperplasie (BPH)
  - Tumoren des Kopfs, Nackens, Torsos und skelettalen Systems
- Weites Produktangebot mit 10 verschiedenen Größen
- Genaue Kalibrierung mit 95% der Mikrosphären innerhalb der angegebenen Größenvarianz
- Farbkodierung für verbesserte Sichtbarkeit und Größenerkennung
- Angeboten in einzelnen Spritzen
- 3 Jahre Haltbarkeit ab Herstellungsdatum

- Las esferas Embozene™ están indicadas para la embolización de:
  - Tumores hipervasculares incl. Fibromas Uterinos (UFE) y Carcinoma Hepatocelular
  - Malformaciones Arteriovenosas (MAV)
  - Hiperplasia Prostática Benigna
  - Tumores de cabeza, cuello, torso y sistema esquelético
- Amplia gama con 10 diferentes tamaños
- Ajustada calibración con un 95% de las microesferas entre el rango de medidas
- Código de color para mejorar la visibilidad y ayudar al reconocimiento de tamaños
- Se venden en jeringuillas únicas
- 3 años de vida desde su fecha de manufacturación

Size	REF 1 ml	REF 2 ml
40 µm	10410-S1	10420-S1
75 µm	10710-S1	10720-S1
100 µm	11010-S1	11020-S1
250 µm	12010-S1	12020-S1
400 µm	14010-S1	14020-S1
500 µm	15010-S1	15020-S1
700 µm	17010-S1	17020-S1
900 µm	19010-S1	19020-S1
1100 µm	111010-S1	111020-S1
1300 µm	113010-S1	113020-S1

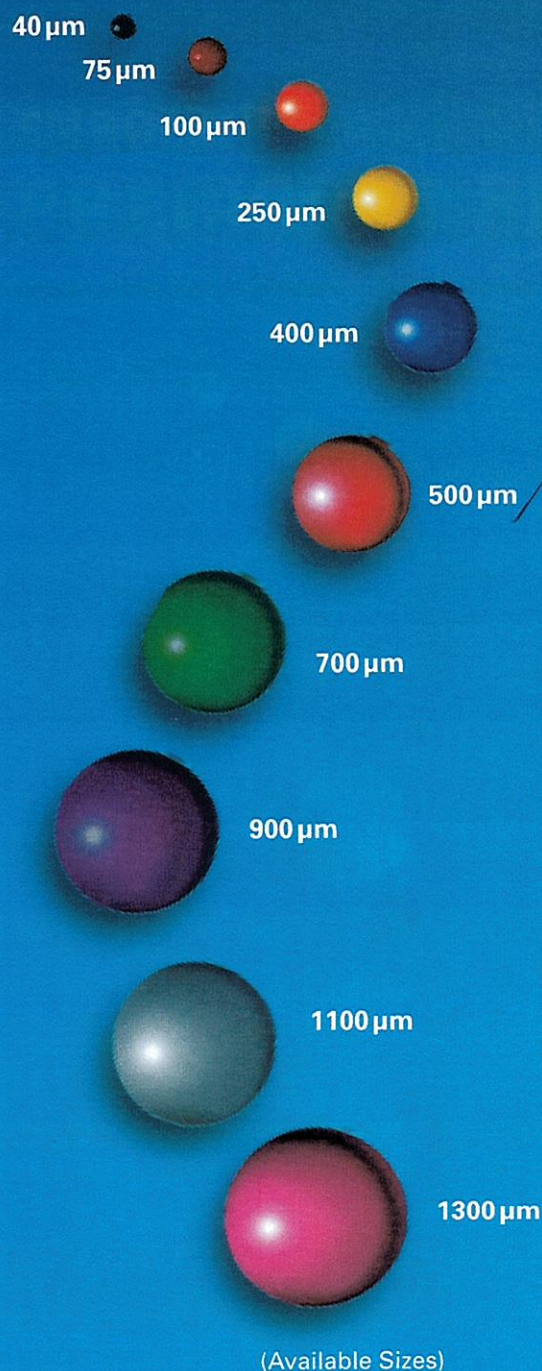
Embozene™ Microspheres are available in prefilled 1 ml and 2 ml syringes.





**EMBOZENE™** Microspheres

# PRECISION FLEXIBILITY CONTROL



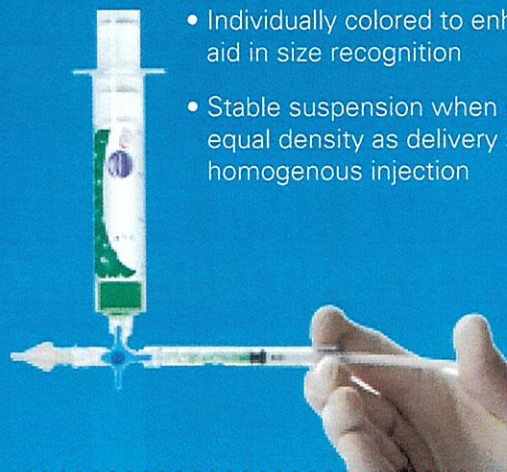
## Precise Calibration

- Offered in a broad range of tightly calibrated sizes
- 95 % of the microspheres are within the stated size variance, resulting in greater confidence when performing super selective and targeted embolization procedures

## Procedural Flexibility

- Largest array of distinctly sized microspheres
- EMBOZENE's elastic compressibility enables to rebound to original shape and volume after passage through appropriate sized microcatheter

## Procedural Control



- Individually colored to enhance visualization and aid in size recognition
- Stable suspension when microspheres reach equal density as delivery solution, intended to aid homogenous injection

## Applied Use

**EMBOZENE™ Microspheres are indicated for the embolization of:**

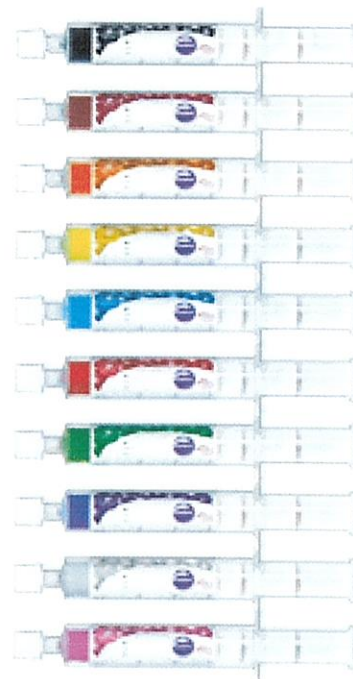
- Hypervascular tumors (H.V.T), incl. Uterine Fibroid Embolization (UFE) and hepatocellular carcinoma
- Arteriovenous malformations (A.V.M.)
- Benign Prostate Hyperplasia (BPH)
- Tumors of head, neck, torso, and skeletal system



# EMBOZENE™ Microspheres

EMBOZENE™ Microspheres are available in prefilled 1 ml and 2 ml syringes.

Size	REF 1 ml	REF 2 ml
40 µm	10410-S1	10420-S1
75 µm	10710-S1	10720-S1
100 µm	11010-S1	11020-S1
250 µm	12010-S1	12020-S1
400 µm	14010-S1	14020-S1
500 µm	15010-S1	15020-S1
700 µm	17010-S1	17020-S1
900 µm	19010-S1	19020-S1
1100 µm	111010-S1	111020-S1
1300 µm	113010-S1	113020-S1



## EMBOZENE™ Microspheres

- Color-coded to enhance visualization and aid in size recognition
- Sold as single syringe units
- 3-year shelf life from date of manufacture

EMBOZENE™ Microspheres are registered or unregistered trademarks of Boston Scientific Corporation or its affiliates.

CAUTION: The law restricts these devices to sale by or on the order of a physician. Indications, contraindications, warnings and instructions for use can be found in the product labeling supplied with each device. Information for the use only in countries with applicable health authority product registrations. Information not intended for use or distribution in France. Illustrations are not necessary to scale. All images are property of Boston Scientific.



## 2. Complex Lesions / Polymer Tip Guidewires

### PT2™ LS

Diameter: .014" (0.37 mm)

CATALOG NUMBER / ORDER NUMBER (GTIN)	LENGTH	TIP CONFIGURATION	TIP LOAD	TIP STYLE	RAIL SUPPORT	COATING	TIP RADIOPACITY	COMPATIBLE	QUANTITY
H749 3893101 0 08714729471103	185 cm	Straight	2.5	Polymer Tip	Light	Hydrophilic	2 cm	ADDWIRE™	1
H749 3893101 2 08714729471110	185 cm	Straight	2.5	Polymer Tip	Light	Hydrophilic	2 cm	ADDWIRE™	5
H749 3893101 J0 08714729471127	185 cm	J	2.5	Polymer Tip	Light	Hydrophilic	2 cm	ADDWIRE™	1
H749 3893101 J2 08714729471134	185 cm	J	2.5	Polymer Tip	Light	Hydrophilic	2 cm	ADDWIRE™	5
H749 3893102 J2 08714729471172	300 cm	J	2.5	Polymer Tip	Light	Hydrophilic	2 cm	ADDWIRE™	5
H749 3893102 2 08714729471158	300 cm	Straight	2.5	Polymer Tip	Light	Hydrophilic	2 cm	ADDWIRE™	5



### CHOICE™ PT Floppy

Diameter: .014" (0.37 mm)

CATALOG NUMBER / ORDER NUMBER (GTIN)	LENGTH	TIP CONFIGURATION	TIP LOAD	TIP STYLE	RAIL SUPPORT	COATING	TIP RADIOPACITY	COMPATIBLE	QUANTITY
H749 1216001 1 08714729252504	182 cm	Straight	2.1	Polymer Tip	Light	Hydrophilic	35 cm	ADDWIRE™	1
H749 1216001 2 08714729150626	182 cm	Straight	2.1	Polymer Tip	Light	Hydrophilic	35 cm	ADDWIRE™	5
H749 1216001 J1 08714729252511	182 cm	J	2.1	Polymer Tip	Light	Hydrophilic	35 cm	ADDWIRE™	1
H749 1216001 J2 08714729193715	182 cm	J	2.1	Polymer Tip	Light	Hydrophilic	35 cm	ADDWIRE™	5
H749 1215401 2 08714729150633	300 cm	Straight	2.1	Polymer Tip	Light	Hydrophilic	35 cm	ADDWIRE™	1
H749 1215401 J2 08714729193708	300 cm	J	2.1	Polymer Tip	Light	Hydrophilic	35 cm	ADDWIRE™	5



### PT2™ MS

Diameter: .014" (0.37 mm)

CATALOG NUMBER / ORDER NUMBER (GTIN)	LENGTH	TIP CONFIGURATION	TIP LOAD	TIP STYLE	RAIL SUPPORT	COATING	TIP RADIOPACITY	COMPATIBLE	QUANTITY
H749 1490201 1 08714729254928	182 cm	Straight	2.9	Polymer Tip	Moderate	Hydrophilic	2 cm	ADDWIRE™	1
H749 1490201 J1 08714729254935	182 cm	J	2.9	Polymer Tip	Moderate	Hydrophilic	2 cm	ADDWIRE™	1
H749 3893103 0 08714729471189	185 cm	Straight	2.9	Polymer Tip	Moderate	Hydrophilic	2 cm	ADDWIRE™	1
H749 3893103 2 08714729471196	185 cm	Straight	2.9	Polymer Tip	Moderate	Hydrophilic	2 cm	ADDWIRE™	5
H749 3893103 J0 08714729471202	185 cm	J	2.9	Polymer Tip	Moderate	Hydrophilic	2 cm	ADDWIRE™	1
H749 3893103 J2 08714729471219	185 cm	J	2.9	Polymer Tip	Moderate	Hydrophilic	2 cm	ADDWIRE™	5
H749 3893104 0 08714729471226	300 cm	Straight	2.9	Polymer Tip	Moderate	Hydrophilic	2 cm	ADDWIRE™	1
H749 3893104 2 08714729471233	300 cm	Straight	2.9	Polymer Tip	Moderate	Hydrophilic	2 cm	ADDWIRE™	5
H749 3893104 J0 08714729471240	300 cm	J	2.9	Polymer Tip	Moderate	Hydrophilic	2 cm	ADDWIRE™	1
H749 3893104 J2 08714729471257	300 cm	J	2.9	Polymer Tip	Moderate	Hydrophilic	2 cm	ADDWIRE™	5





## PT GRAPHIX™ Intermediate

Diameter: .014" (0.37 mm)

CATALOG NUMBER / ORDER NUMBER (GTIN)	LENGTH	TIP CONFIGURATION	TIP LOAD	TIP STYLE	RAIL SUPPORT	COATING	TIP RADIOPACITY	COMPATIBLE	QUANTITY
H749 1490201 2 08714729141723	182 cm	Straight	1.7	Polymer Tip	Moderate	Hydrophilic	2 cm	ADDWIRE™	5
H749 1490201 J2 08714729141730	182 cm	J	1.7	Polymer Tip	Moderate	Hydrophilic	2 cm	ADDWIRE™	5
H749 1491401 1 08714729255017	300 cm	Straight	1.7	Polymer Tip	Moderate	Hydrophilic	2 cm	ADDWIRE™	1
H749 1491401 2 08714729141969	300 cm	Straight	1.7	Polymer Tip	Moderate	Hydrophilic	2 cm	ADDWIRE™	5
H749 1491401 J2 08714729141976	300 cm	J	1.7	Polymer Tip	Moderate	Hydrophilic	2 cm	ADDWIRE™	5



## PT GRAPHIX™ Standard

Diameter: .014" (0.37 mm)

CATALOG NUMBER / ORDER NUMBER (GTIN)	LENGTH	TIP CONFIGURATION	TIP LOAD	TIP STYLE	RAIL SUPPORT	COATING	TIP RADIOPACITY	COMPATIBLE	QUANTITY
H749 1490301 2 08714729188469	182 cm	Straight	5.3	Polymer Tip	Moderate	Hydrophilic	2 cm	ADDWIRE™	5
H749 1490301 J2 08714729141754	182 cm	J	5.3	Polymer Tip	Moderate	Hydrophilic	2 cm	ADDWIRE™	5





## CHOICE™ Extra Support

Diameter: .014" (0.37 mm)

CATALOG NUMBER / ORDER NUMBER (GTIN)	LENGTH	TIP CONFIGURATION	TIP LOAD	TIP STYLE	RAIL SUPPORT	COATING	TIP RADIOPACITY	COMPATIBLE	QUANTITY
H749 1213501 1 08714729252405	182 cm	Straight	0.9	Spring Coil Tip	Extra	Hybrid*	3 cm	ADDWIRE™	1
H749 1213501 J1 08714729252412	182 cm	Straight	0.9	Spring Coil Tip	Extra	Hybrid*	3 cm	ADDWIRE™	1
H749 1213501 2 08714729150572	182 cm	Straight	0.9	Spring Coil Tip	Extra	Hybrid*	3 cm	ADDWIRE™	5
H749 1213501 J2 08714729193692	182 cm	J	0.9	Spring Coil Tip	Extra	Hybrid*	3 cm	ADDWIRE™	5
H749 1211901 2 08714729150619	300 cm	Straight	0.9	Spring Coil Tip	Extra	Hybrid*	3 cm	ADDWIRE™	5
H749 1211901 J2 08714729193685	300 cm	J	0.9	Spring Coil Tip	Extra	Hybrid*	3 cm	ADDWIRE™	5



## CHOICE™ PT Extra Support

Diameter: .014" (0.37 mm)

CATALOG NUMBER / ORDER NUMBER (GTIN)	LENGTH	TIP CONFIGURATION	TIP LOAD	TIP STYLE	RAIL SUPPORT	COATING	TIP RADIOPACITY	COMPATIBLE	QUANTITY
H749 1216101 1 08714729252528	182 cm	Straight	2.0	Polymer Tip	Extra	Hydrophilic	35 cm	ADDWIRE™	1
H749 1216101 J1 08714729252535	182 cm	J	2.0	Polymer Tip	Extra	Hydrophilic	35 cm	ADDWIRE™	1
H749 1216101 2 08714729176992	182 cm	Straight	2.0	Polymer Tip	Extra	Hydrophilic	35 cm	ADDWIRE™	5
H749 1216101 J2 08714729177005	182 cm	J	2.0	Polymer Tip	Extra	Hydrophilic	35 cm	ADDWIRE™	5
H749 1215501 2 08714729177012	300 cm	Straight	2.0	Polymer Tip	Extra	Hydrophilic	35 cm	ADDWIRE™	5
H749 1215501 J2 08714729176947	300 cm	J	2.0	Polymer Tip	Extra	Hydrophilic	35 cm	ADDWIRE™	5





## MAILMAN™

Diameter: .014" (0.37 mm)

CATALOG NUMBER / ORDER NUMBER (GTIN)	LENGTH	TIP CONFIGURATION	TIP LOAD	TIP STYLE	RAIL SUPPORT	COATING	TIP RADIOCAPACITY	COMPATIBLE	QUANTITY
H749 1213601 2 08714729165712	182 cm	Straight	0.8	Spring Coil Tip	Super	Hybrid*	3 cm	ADDWIRE™	5
H749 1213601 J2 08714729165729	182 cm	J	0.8	Spring Coil Tip	Super	Hybrid*	3 cm	ADDWIRE™	5
H749 1212001 2 08714729188162	300 cm	Straight	0.8	Spring Coil Tip	Super	Hybrid*	3 cm	ADDWIRE™	5
H749 1212001 J2 08714729165705	300 cm	J	0.8	Spring Coil Tip	Super	Hybrid*	3 cm	ADDWIRE™	5



## PT GRAPHIX™ Super Support

Diameter: .014" (0.37 mm)

CATALOG NUMBER / ORDER NUMBER (GTIN)	LENGTH	TIP CONFIGURATION	TIP LOAD	TIP STYLE	RAIL SUPPORT	COATING	TIP RADIOCAPACITY	COMPATIBLE	QUANTITY
H749 1490501 2 08714729141785	182 cm	Straight	3.6	Polymer Tip	Super	Hydrophilic	2 cm	ADDWIRE™	5
H749 1490501 J2 08714729188476	182 cm	J	3.6	Polymer Tip	Super	Hydrophilic	2 cm	ADDWIRE™	5

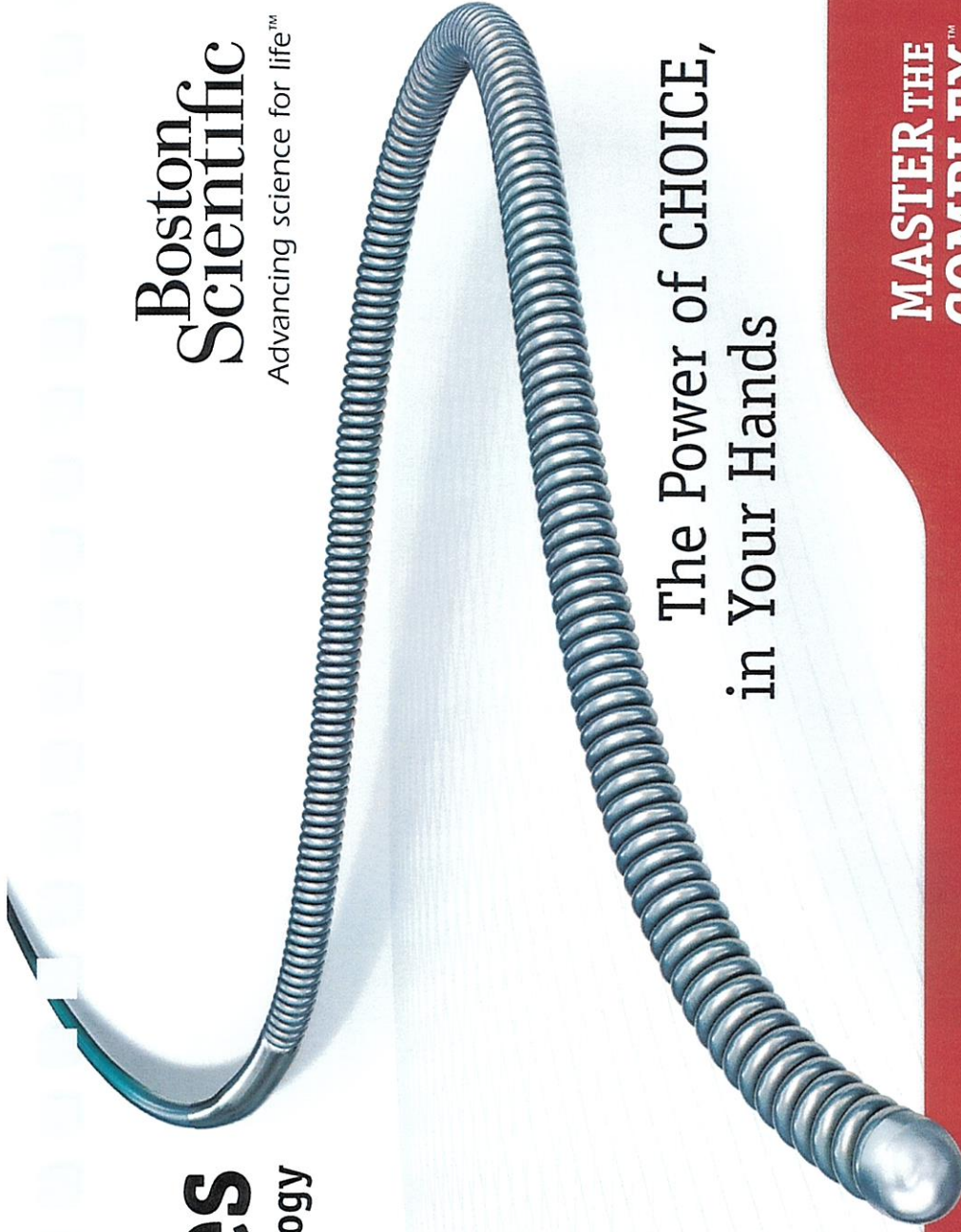




# Guidewires

For Interventional Cardiology

**Boston  
Scientific**  
Advancing science for life™



The Power of CHOICE,  
in Your Hands

**MASTER THE  
COMPLEX™**



## Frontline Guidewires

**SAMURAI™**

### Description

- Excellent steerability
- Moderate support
- Highly shapeable/ flexible distal tip

**Tip Style** Spring Coil

**Tip flexibility/rail support profile**  
Soft tip with moderate support

**Tip Load** 0.5 g

**Core Material** Stainless Steel

**Coating** Moderated hydrophilic  
(Reduced on distal 1 cm)

**Nominal outer diameter**  
0.014 in (0.37 mm)

### ICT=Inner Cyclone Technology (ICT)

#### Torque performance

ICT construction achieves efficient transmission of proximal rotation to the tip without whipping and provides exceptional torque response.

**Tip durability** ICT construction provides increased durability

**Shapability** ICT construction provides ease of shaping and reshaping with improved memory characteristics

**Lubricity** Proprietary lubricious coating achieves both super lubricity and good tactile feedback



Order Number	GTIN Code	Length	Tip Configuration	Tip Style	Rail Support	Coating	Tip Radiopacity	Quantity
H749 39302190 2	08714729881216	190 cm	Straight	Spring Coil	Moderate	Hydrophilic	4 cm	5
H749 39302190 J2	08714729881223	190 cm	J	Spring Coil	Moderate	Hydrophilic	4 cm	5
H749 39302300 2	08714729881230	300 cm	Straight	Spring Coil	Moderate	Hydrophilic	4 cm	5
H749 39302300 J2	08714729881209	300 cm	J	Spring Coil	Moderate	Hydrophilic	4 cm	5

10

## Access and Crossing Guidewires

**CHOICE™  
PT Floppy**

### Description

- Light rail support
- Help enable crossing of highly stenosed lesions
- Facilitate access to highly tortuous anatomy

**Tip Style** Polymer Tip

**Tip flexibility/rail support profile**  
Intermediate tip with light support

**Tip Load** 2.1 g

**Core Material** Stainless Steel

**Coating** Hydrophilic

**Nominal outer diameter**  
0.014 in (0.37 mm)



Order Number	GTIN Code	Length	Tip Configuration	Tip Style	Rail Support	Coating	Tip Radiopacity	Quantity
H749 1216001 M2	08714729877264	182 cm	Straight	Polymer Tip	Light	Hydrophilic	35 cm	5
H749 1216001 MJ2	08714729877271	182 cm	J	Polymer Tip	Light	Hydrophilic	35 cm	5
H749 1216001 2	08714729150626	182 cm	Straight	Polymer Tip	Light	Hydrophilic	35 cm	5
H749 1216001 J2	08714729193715	182 cm	J	Polymer Tip	Light	Hydrophilic	35 cm	5
H749 1215401 2	08714729150633	300 cm	Straight	Polymer Tip	Light	Hydrophilic	35 cm	5
H749 1215401 J2	08714729193708	300 cm	J	Polymer Tip	Light	Hydrophilic	35 cm	5

11

30



## Access and Crossing Guidewires

### PT<sup>2</sup><sup>TM</sup> Light Support

#### Description

- Light rail support
- Help enable crossing of highly stenosed lesions
- Facilitate access to highly tortuous anatomy

**Tip Style** Polymer Tip

**Tip flexibility/rail support profile**  
Intermediate tip with light support

**Tip Load** 2.5 g

**Core Material** Linear Elastic Nitinol

**Coating** Hydrophilic

**Nominal outer diameter**  
0.014 in (0.37 mm)



Order Number	GTIN Code	Length	Tip Configuration	Tip Style	Rail Support	Coating	Tip Radiopacity	Quantity
H749 <b>3893101</b> 2	08714729471110	185 cm	Straight	Polymer Tip	Light	Hydrophilic	2 cm	5
H749 <b>3893101</b> J2	08714729471134	185 cm	J	Polymer Tip	Light	Hydrophilic	2 cm	5
H749 <b>3893102</b> 2	08714729471158	300 cm	Straight	Polymer Tip	Light	Hydrophilic	2 cm	5
H749 <b>3893102</b> J2	08714729471172	300 cm	J	Polymer Tip	Light	Hydrophilic	2 cm	5

12

## Access and Crossing Guidewires

### CHOICE<sup>TM</sup> Standard

#### Description

- Light rail support
- Excellent crossability & steerability

**Tip Style** Spring Coil

**Tip flexibility/rail support profile**  
Standard tip with light support

**Tip Load** 2.8 g

**Core Material** Stainless Steel

#### Coating

Hybrid  
Hydrophilic coating  
Distal 3 cm uncoated

**Nominal outer diameter**  
0.014 in (0.37 mm)



Order Number	GTIN Code	Length	Tip Configuration	Tip Style	Rail Support	Coating	Tip Radiopacity	Quantity
H749 <b>1213401</b> M2	08714729877141	182 cm	Straight	Spring Coil Tip	Light	Hybrid	3 cm	5
H749 <b>1213401</b> MJ2	08714729877158	182 cm	J	Spring Coil Tip	Light	Hybrid	3 cm	5
H749 <b>1213401</b> 2	08714729150565	182 cm	Straight	Spring Coil Tip	Light	Hybrid	3 cm	5
H749 <b>1213401</b> J2	08714729155737	182 cm	J	Spring Coil Tip	Light	Hybrid	3 cm	5
H749 <b>1211801</b> 2	08714729150602	300 cm	Straight	Spring Coil Tip	Light	Hybrid	3 cm	5
H749 <b>1211801</b> J2	08714729193678	300 cm	J	Spring Coil Tip	Light	Hybrid	3 cm	5

13



## Access and Crossing Guidewires

### PT Graphix™ Intermediate

#### Description

- Moderate rail support
- Help enable crossing of highly stenosed lesions
- Facilitate access to highly tortuous anatomy

#### Tip Style Polymer Tip

#### Tip flexibility/rail support profile

Intermediate tip with moderate support

Tip Load 1.7 g

Core Material Stainless Steel

Coating Hydrophilic

Nominal outer diameter  
0.014 in (0.37 mm)



Order Number	GTIN Code	Length	Tip Configuration	Tip Style	Rail Support	Coating	Tip Radiopacity	Quantity
H749 1490201 M2	08714729877202	182 cm	Straight	Polymer Tip	Moderate	Hydrophilic	2 cm	5
H749 1490201 MJ2	08714729877219	182 cm	J	Polymer Tip	Moderate	Hydrophilic	2 cm	5
H749 1490201 2	08714729141723	182 cm	Straight	Polymer Tip	Moderate	Hydrophilic	2 cm	5
H749 1490201 J2	08714729141730	182 cm	J	Polymer Tip	Moderate	Hydrophilic	2 cm	5
H749 1491401 2	08714729141969	300 cm	Straight	Polymer Tip	Moderate	Hydrophilic	2 cm	5
H749 1491401 J2	08714729141976	300 cm	J	Polymer Tip	Moderate	Hydrophilic	2 cm	5

14

## Access and Crossing Guidewires

### PT<sup>2</sup>™ Moderate Support

#### Description

- Moderate rail support
- Help enable crossing of highly stenosed lesions
- Facilitate access to highly tortuous anatomy

#### Tip Style Polymer Tip

#### Tip flexibility/rail support profile

Floppy tip with moderate support

Tip Load 2.9 g

Core Material Linear Elastic Nitinol

Coating Hydrophilic

Nominal outer diameter  
0.014 in (0.37 mm)



Order Number	GTIN Code	Length	Tip Configuration	Tip Style	Rail Support	Coating	Tip Radiopacity	Quantity
H749 3893103 2	08714729471110	185 cm	Straight	Moderate	Moderate	Hydrophilic	2 cm	5
H749 3893103 J2	08714729471134	185 cm	J	Moderate	Moderate	Hydrophilic	2 cm	5
H749 3893104 2	08714729471158	300 cm	Straight	Moderate	Moderate	Hydrophilic	2 cm	5
H749 3893104 J2	08714729471172	300 cm	J	Moderate	Moderate	Hydrophilic	2 cm	5

15



## Delivery Support Guidewires

### CHOICE™ Extra Support

#### Description

- Extra Rail Support
- Help enable vessel straightening
- Highly flexible distal tips to reduce vessel trauma

#### Tip Style Spring Coil

#### Tip flexibility/rail support profile

Floppy tip with extra support

**Tip Load** 0.9 g

**Core Material** Stainless Steel

#### Coating

Hybrid  
Hydrophilic coating  
Distal 3 cm uncoated

#### Nominal outer diameter

0.014 in (0.37 mm)



Order Number	GTIN Code	Length	Tip Configuration	Tip Style	Rail Support	Coating	Tip Radiopacity	Quantity
H749 <b>1213501</b> M2	08714729877165	182 cm	Straight	Spring Coil Tip	Extra	Hybrid	3 cm	5
H749 <b>1213501</b> MJ2	08714729877172	182 cm	J	Spring Coil Tip	Extra	Hybrid	3 cm	5
H749 <b>1213501</b> 2	08714729176947	182 cm	Straight	Spring Coil Tip	Extra	Hybrid	3 cm	5
H749 <b>1213501</b> J2	08714729193692	182 cm	J	Spring Coil Tip	Extra	Hybrid	3 cm	5
H749 <b>1211901</b> 2	08714729150619	300 cm	Straight	Spring Coil Tip	Extra	Hybrid	3 cm	5
H749 <b>1211901</b> J2	08714729193685	300 cm	J	Spring Coil Tip	Extra	Hybrid	3 cm	5

16

## Delivery Support Guidewires

### CHOICE™ PT Extra Support

#### Description

- Extra Rail Support
- Help enable crossing of highly stenosed lesions
- Facilitate access to highly tortuous anatomy

#### Tip Style Polymer Tip

#### Tip flexibility/rail support profile

Intermediate tip with extra support

**Tip Load** 2.0 g

**Core Material** Stainless Steel

**Coating** Hydrophilic

#### Nominal outer diameter

0.014 in (0.37 mm)



Order Number	GTIN Code	Length	Tip Configuration	Tip Style	Rail Support	Coating	Tip Radiopacity	Quantity
H749 <b>1216101</b> M2	08714729877288	182 cm	Straight	Polymer Tip	Extra	Hydrophilic	35 cm	5
H749 <b>1216101</b> MJ2	08714729877295	182 cm	J	Polymer Tip	Extra	Hydrophilic	35 cm	5
H749 <b>1216101</b> 2	08714729176992	182 cm	Straight	Polymer Tip	Extra	Hydrophilic	35 cm	5
H749 <b>1216101</b> J2	08714729177005	182 cm	J	Polymer Tip	Extra	Hydrophilic	35 cm	5
H749 <b>1215501</b> 2	08714729177012	300 cm	Straight	Polymer Tip	Extra	Hydrophilic	35 cm	5
H749 <b>1215501</b> J2	08714729176947	300 cm	J	Polymer Tip	Extra	Hydrophilic	35 cm	5

17



## Delivery Support Guidewires

### PT Graphix™ Super Support

#### Description

- Super rail support
- Help enable crossing of highly stenosed lesions
- Facilitate access to highly tortuous anatomy

#### Tip Style

Polymer Tip  
Intermediate tip with extra support

Tip Load 3.6 g

Core Material Stainless Steel

Coating Hydrophilic

Nominal outer diameter  
0.014 in (0.37 mm)



Order Number	GTIN Code	Length	Tip Configuration	Tip Style	Rail Support	Coating	Tip Radiopacity	Quantity
H749 1490501 M2	08714729877240	182 cm	Straight	Polymer Tip	Super	Hydrophilic	2 cm	5
H749 1490501 MJ2	08714729877257	182 cm	J	Polymer Tip	Super	Hydrophilic	2 cm	5
H749 1490501 2	08714729141785	182 cm	Straight	Polymer Tip	Super	Hydrophilic	2 cm	5
H749 1490501 J2	08714729188476	182 cm	J	Polymer Tip	Super	Hydrophilic	2 cm	5

18

## Delivery Support Guidewires

### MAILMAN™

#### Description

- Super Rail Support
- Help enable vessel straightening
- Highly flexible distal tips to reduce vessel trauma

#### Tip Style

Spring Coil  
Floppy tip with super support

Core Material Stainless Steel

#### Coating

Hybrid  
Hydrophilic coating  
Distal 3 cm uncoated

Nominal outer diameter  
0.014 in (0.37 mm)



Order Number	GTIN Code	Length	Tip Configuration	Tip Style	Rail Support	Coating	Tip Radiopacity	Quantity
H749 1213601 M2	08714729877189	182 cm	Straight	Spring Coil Tip	Super	Hybrid	3 cm	5
H749 1213601 MJ2	08714729877196	182 cm	J	Spring Coil Tip	Super	Hybrid	3 cm	5
H749 1213601 2	08714729165712	182 cm	Straight	Spring Coil Tip	Super	Hybrid	3 cm	5
H749 1213601 J2	08714729165729	182 cm	J	Spring Coil Tip	Super	Hybrid	3 cm	5
H749 1212001 2	08714729188162	300 cm	Straight	Spring Coil Tip	Super	Hybrid	3 cm	5
H749 1212001 J2	08714729165705	300 cm	J	Spring Coil Tip	Super	Hybrid	3 cm	5

19



## 5 Accessories

### Encore™ 26

Inflation Device

- Specifically designed for high pressure applications
- Working range to 26 ATM (2634 kPa) to meet the requirements of high pressure applications
- High pressure stopcock designed to prevent leakage during high pressure inflation throughout the working range

Order Number	Description	Units per box
M001151050	20cc Encore™ inflation device	1
M001151062	20cc Encore™ inflation device	5

### Encore™ 40

Inflator

- Inflates up to 40 ATMs.
- 25 cc capacity, complete with pressure gauge.
- Large printed pressure gauge that glows in the dark for easy reading in dark labs.
- Quick latch mechanism allows for rapid deflation, even from max pressure.
- Clear barrel provides a precise view of the content and volume allowing user to perform thorough purging.

Order Number	Description	Units per box
M001394472540	25CC 40ATM Inflation Device	1



### Gateway™ Plus

Y-Adapter

- Hemostasis valve designed to provide tight seal around devices and stabilize guidewire position during over-the-wire injection
- Large 0.118" (2.997 mm) I.D. facilitates device passage
- Rotating connector positions the injection port in an optimal location throughout the procedure

Order Number	Description	Units per box
M001153223	Gateway™ Plus Y-Adapter	10



Ordering Information - 52  
Peripheral Interventions

Boston  
Scientific

1

Guidewires

2

Balloon  
Dilatation  
Catheters

3

Specialty  
Balloons

4

Catheters

5

Accessories

6

Stents

7

Drug-Eluting  
Technologies

8

Peripheral  
Thrombectomy

9

Venous  
Thrombo-  
embolism

10

Peripheral  
Atherectomy

11

IVUS  
Intravascular  
Ultrasound System

12

Embolio-  
Protection

13

Peripheral  
Embolisations

14

SIRT

15

Non-Vascular  
Interventions

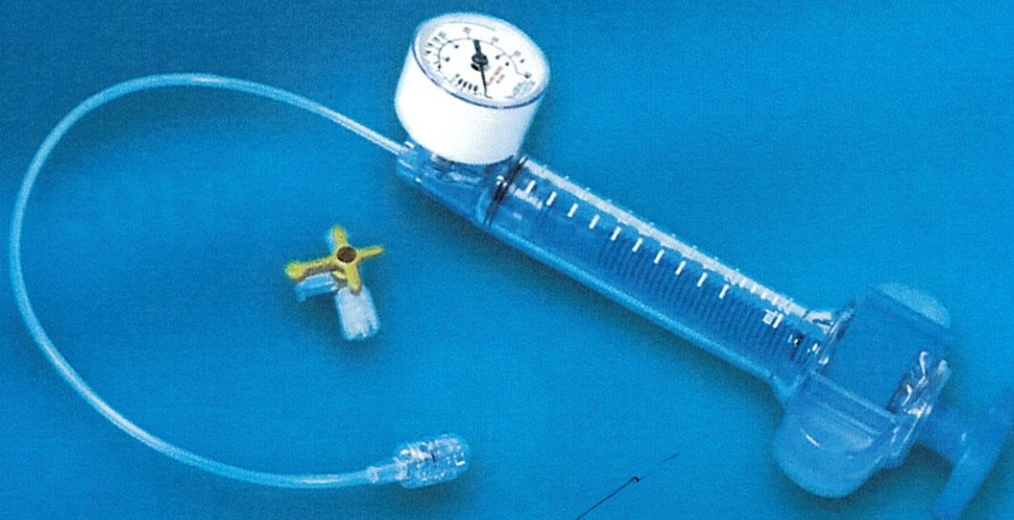
16

Ablation

35



# Encore™ 40 Inflator



- Inflates **up to 40 ATMs**.
- **25 cc capacity**, complete with pressure gauge.
- Large printed pressure gauge that glows in the dark for **easy reading in dark labs**.
- Quick latch mechanism allows for **rapid deflation**, even from max pressure.
- Clear barrel provides a **precise view of the content and volume** allowing user to perform thorough purging.

Order Number	Description	Units per box
M001394472540	25CC 40ATM Inflation Device	1

All cited trademarks are the property of their respective owners. CAUTION: The law restricts these devices to sale by or on the order of a physician. Indications, contraindications, warnings and instructions for use can be found in the product labeling supplied with each device. Information for the use only in countries with applicable health authority product registrations. Material not intended for use in France.

PI-901901-AA © 2020 Boston Scientific Corporation or its affiliates. All rights reserved.